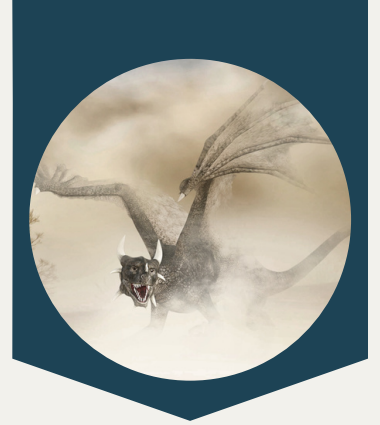


Feedback

for UK and/or US Application Essays



◆ INSTRUCTIONS ◆

Please adhere to the following instructions and deadlines to request for guidance and feedback on your application essays:

- You are allowed to submit a maximum of **once for your UCAS statement**, and a **further once for a US application for one school** of choice.
- Your essays should be submitted in a single document in **Microsoft Word format, Arial, font size 11**. Please do not send other formats, links, or images of your app form.
- Ensure you submit as finalized a draft as possible, as early as possible. This gives you sufficient time to refine your drafts post-feedback.
- All submissions must reach us by the respective deadlines:
- We will respond within two weeks with feedback. The aim of feedback is to spur independent thought, prompt you in the right direction, whilst keeping your authentic voice, hence it is given only **once**.
- Given the massive volume we deal with, **late submissions will not be accepted**.
- HEO will be closed from 1 Dec 2023 for the processing of applications. Help us by being on time so that we can help you!
- Adhere to all internal deadlines in our Timelines Guide. Best of luck in your pursuits!

Oxford/Cambridge and/or Med/Dentistry/Vet Med/Sci applicants	10 Sep (Sun) 2359h
US Early Applicants	6 Oct (Fri) 2359h
All UK Non-Oxbridge/Med and all US Regular Applicants	10 Nov (Fri) 2359h

◆ UK APPS ◆

- Name your file as “Your Name Class Major.docx” (e.g. ABC 22A01Q Law.docx).
- At the top of your document, include your full name, class and list of courses and universities in rank order, e.g.
 - 1) College X, Major Y
 - 2) College Z, Major W

◆ US APPS ◆

- Name your file as “Your Name Class University.docx” (e.g., XYZ 22S09B SPO University.docx).
- Submit your CommonApp 10+5, essay and full set of supplemental essays for one school of choice. Ensure you are writing the essays for the Fall 2024 application.
- At the top of your document, include your full name, class and the school you're writing for.

HOW TO SUBMIT?



Attach your Word document and email to collegeadmissions@ri.edu.sg

HELPFUL RESOURCES



Find our UK and US statement writing guides at <https://www.ri.edu.sg/school-life/higher-education-office>